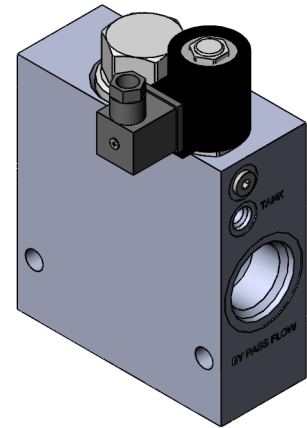
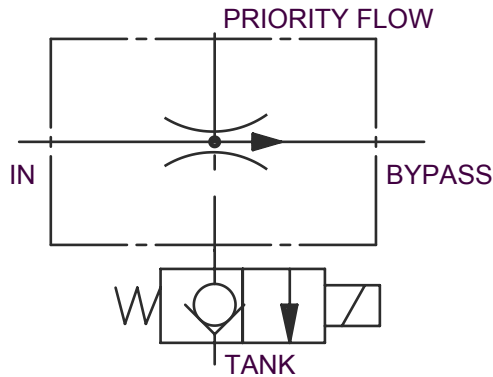


6KProducts

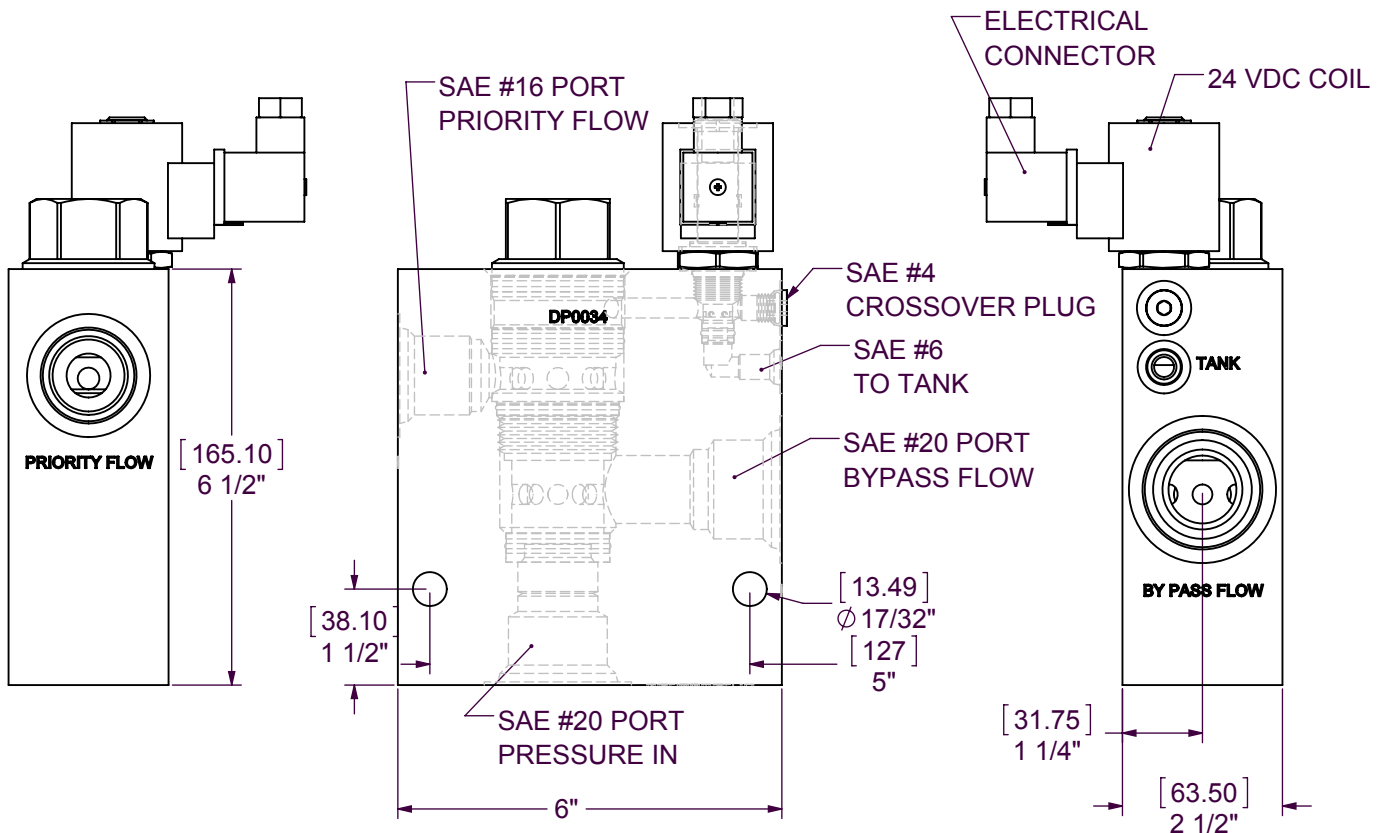
Bringing reliability to high pressure hydraulic sys

DP0033

VENTED PRIORITY FLOW DIVIDER ASSY.



This assembly is design for a maximum input flow of 120 GPM and a maximum priority flow of 50 GPM. To insure proper operation there should be a minimum of 50 PSI pressure at the BYPASS port with or without the solenoid valve actuated. The priority flow is a preset amount that is set when ordered and is not wrench adjustable. This assmby can be built with different voltage coils on request. For more information call 360-264-2141



Specification subject to change without notice.