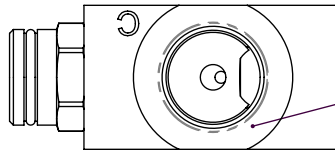


# 6KProducts

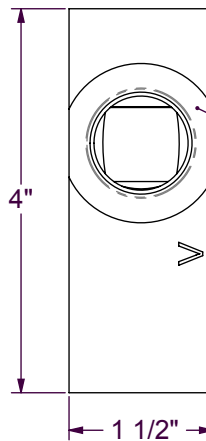
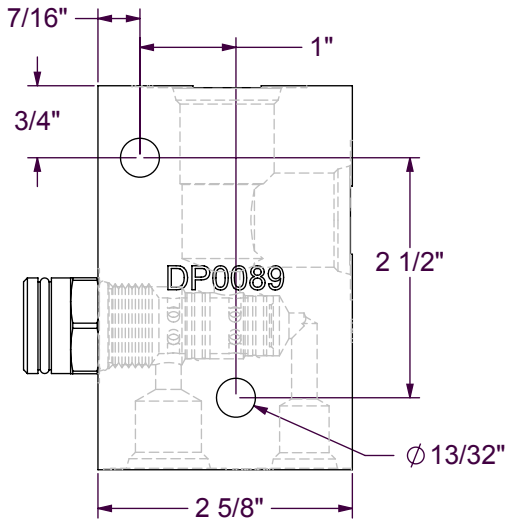
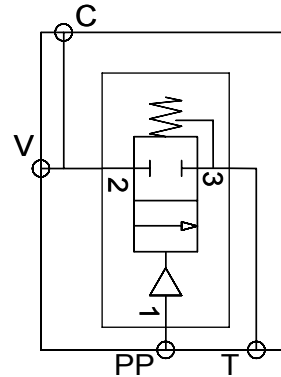
Bringing reliability to high pressure hydraulic systems

DP0090

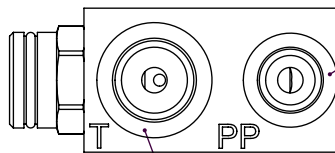
10 GPM DUMP VALVE ASSEMBLY



#12 O-RING BOSS TO  
BASE OF CYLINDER

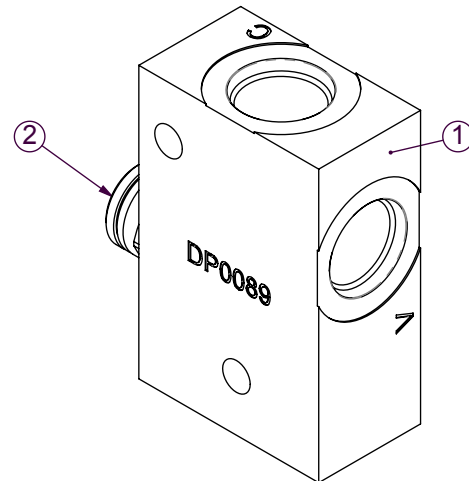


#12 O-RING BOSS  
FROM SPLITTER  
VALVE TO EXTEND  
CYLINDER



#6 O-RING BOSS  
TEE INTO THE  
CYLINDER RETRACT  
PORT

# O-RING BOSS  
CONNECT TO  
TANK



This valve assembly is to dump excess flow from the base end of a hydraulic cylinder when retracting. The maximum through flow is 50 GPM. The maximum dump to tank flow is 10 GPM. Maximum operating pressure is 3,000 PSI. Minimum pilot pressure into #6 PP port is 200 PSI. This manifold should be placed close to the base end of the cylinder.

Specification subject to change without notice.

ITEM No.	QTY	PART No.	DESCRIPTION	REMARKS
1	1	DP0089	10 GPM DUMP VALVE BODY	
2	1	VHH061	CARTRIDGE VALVE, HydraForce PD10-30-0-N-60	