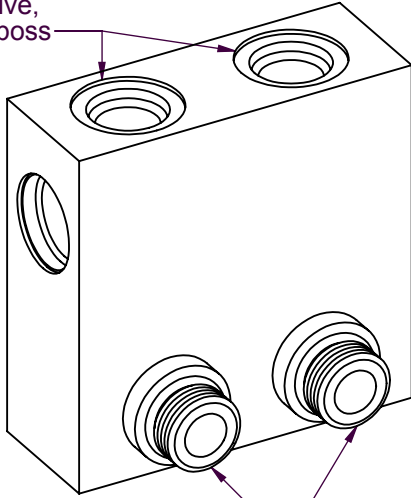


6KProducts

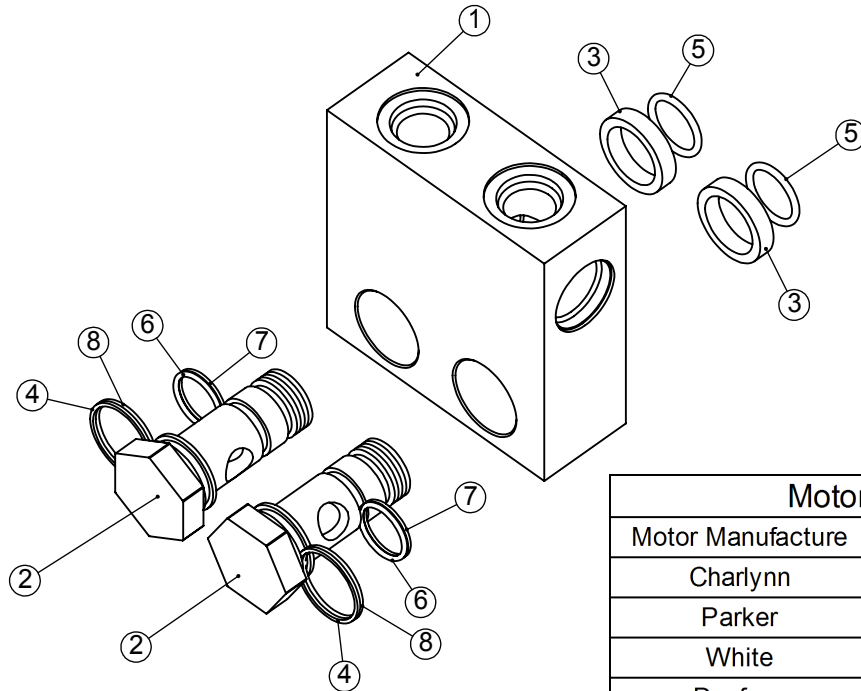
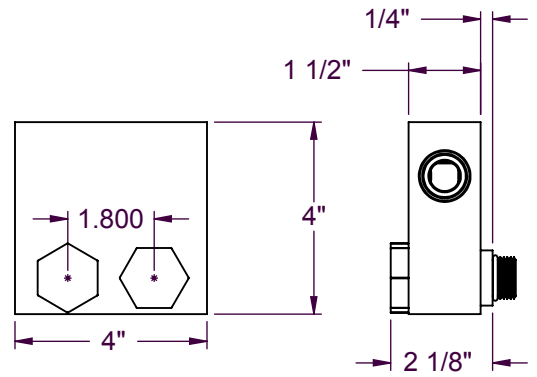
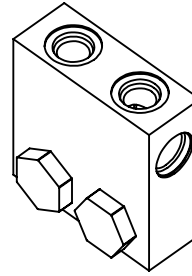
Bringing reliability to high pressure hydraulic systems

DPC006 CROSS PORT RELIEF SUB ASSEMBLY, 30 GPM

From directional control valve, #8 o-ring boss



These thread into the #10 motor ports



Motor Application Information

Motor Manufacture	Motor Models That This Unit May Fit
Charlynn	101, 103, and 158
Parker	ME, MB, TE, and TJ
White	RE
Danfoss	DS and DH
Dynamic	BMPH, BMRS

ITEM No.	QTY.	PART No.	DESCRIPTION	REMARKS
1	1	DPC001	CROSS PORT RELIEF BLOCK	
2	2	DPC002	RELIEF STUD	
3	2	DPC003	RELIEF WASHER	
4	2	SO8022	#8-022 BACK UP RING	
5	2	SO3910	#3-910 O-RING	
6	2	SO2018	#2-018 O-RING	
7	2	SO8018	#8-018 BACK UP RING	
8	2	SO2022	#2-022 O-RING	